

# Jack from The Nightmare Before Christmas

Version 1.0 (3/4/2020)

Pattern by Amy Albin ([strangequilting.blogspot.com](http://strangequilting.blogspot.com))

This block should be a 12 inch block finished. There are ¼ inch seam allowances. There are a total of 5 colors. There are several wedges that come together to create the block. You can embroider or draw on the details of the face after construction. For the striped tuxedo jacket/bowtie, you can either use pinstripe fabric, embroider or draw the lines on with fabric paint. I have included the suggested direction of the stirpes on the detail image. Enjoy! For personal/non-commercial use only. If you have any questions or comments, please email me [oddetsy@gmail.com](mailto:oddetsy@gmail.com)

Construction is as follows:

HEAD:

Make A.

Make B+C+D.

Join to A = EYES.

Make E+F+G.

Join to EYES.

Make H.

Join to EYES.

Make I+J+K+L.

Join to EYES.

Join M to EYES

Join N to EYES= FACE.

Join O to FACE.

Join P to FACE.

Join Q to FACE.

Join R to FACE.

Make S and join to FACE.

Make T and join to FACE.

Make U and join to FACE.

Join V to FACE. Set aside.

BODY:

Make  $W+(Y+X)+Z$  = SHOULDER1.

Join AA to SHOULDER. Set aside.

Make  $AB+AC+AD+AE$  = TIE.

Make  $AF+AG+AH$  and join to TIE.

Make  $AI+AJ$  and join to TIE. Set aside.

Make AK.

Make  $AL+AM+AN+AO$  = SHOULDER2

Join to SHOULDER2 to AK.

Make AP and join to SHOULDER2.

Join  $SHOULDER1+TIE+SHOULDER2$  = BODY

FINAL CONSTRUCTION:

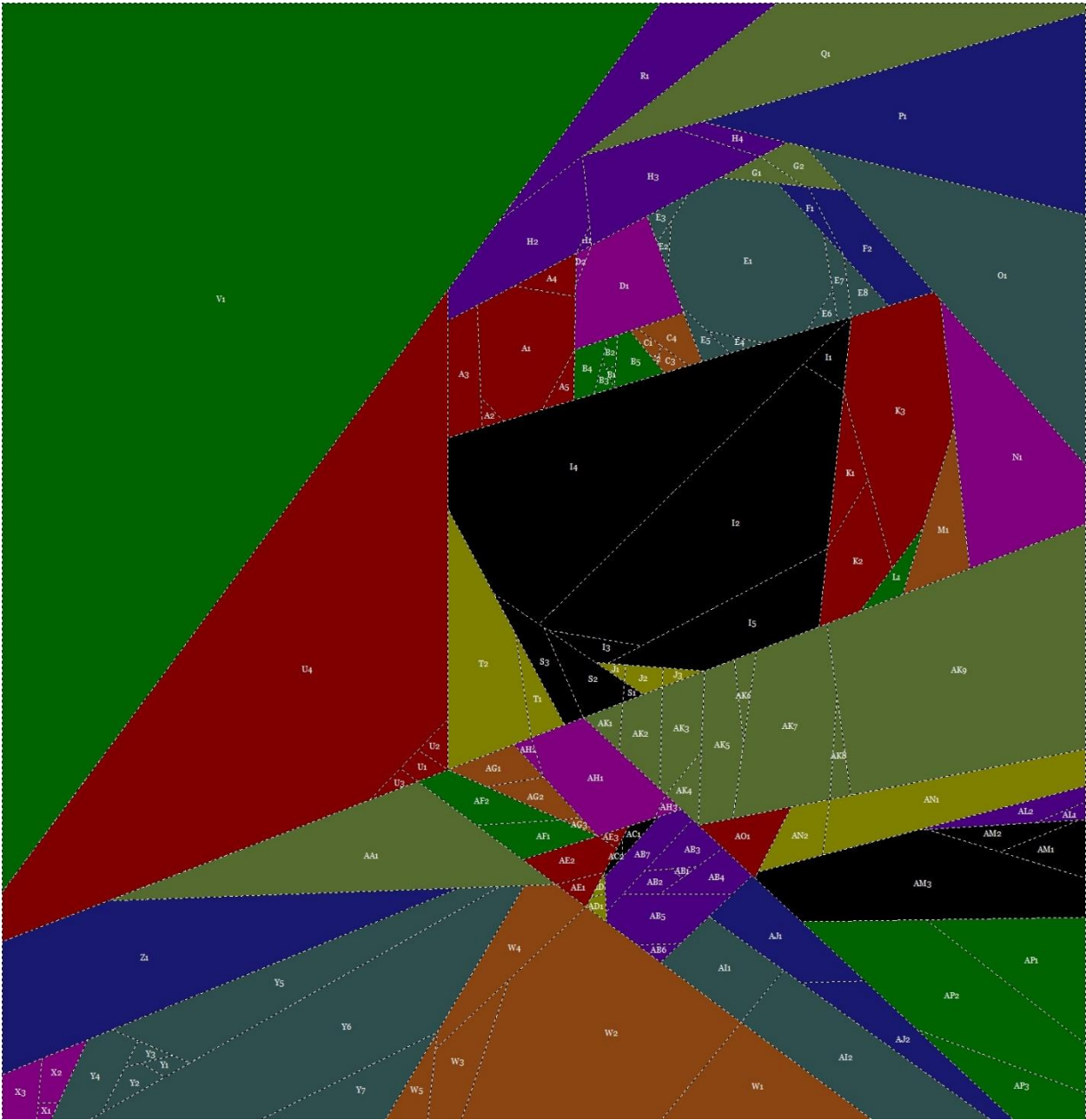
Join FACE to BODY.

Add details with embroidery or fabric paint/pens.

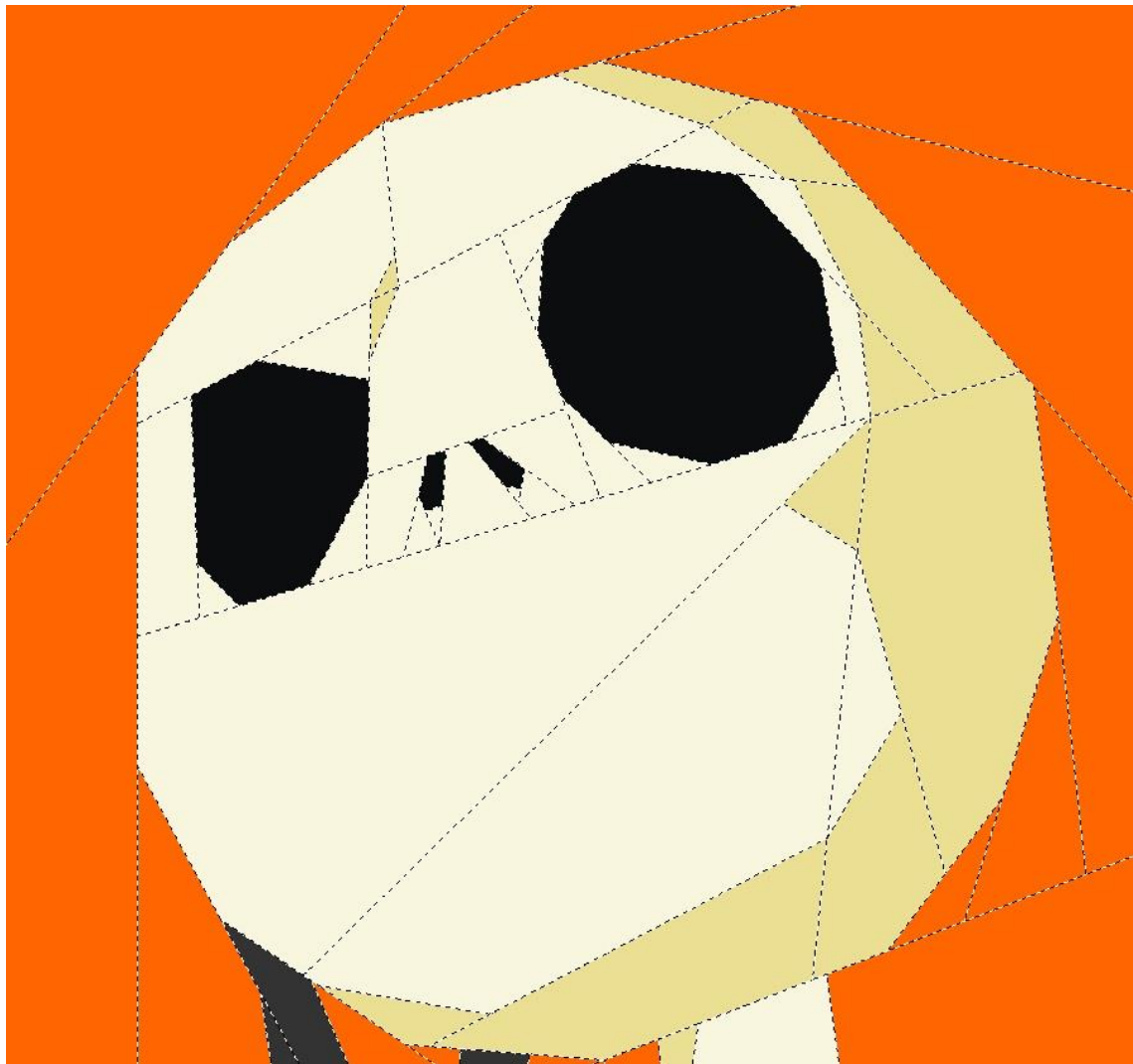
Embroidery/Fabric Paint/Pinstripe Details



Piecing details



Face Detail



Tie Detail

